

NATUCER

PALAZZO

Natucer's Palazzo series is inspired by the terrazzo floors found in the palaces of Europe. Their interpretation of this classic look has a unique twist. They chose to make it with a fine grain and rich, not overly contrasting color variation. Then they intensified the authenticity of the

(39C)

handcrafted, terrazzo look by using bisque produced with their special wet clay extrusion technique. The resulting 9x9 body has gently cushioned edges that have a slightly shinier patina. All of these fine details result in a product that looks like an old, handmade palace floor that has been worn over time.



9 x 9 Field



Beige



Nuvola



Luce

9 x 9 Decos



Palazzo Piero



Palazzo Nicola

Colors are intended as a guide only and may vary from actual tile. Sizes listed are nominal. Please check samples before making final selection and to get actual dimensions for layout. See reverse side for additional product information.

Sizes - Non-Rectified

9 x 9 Field NRPO--/99

Field Colors

Beige NRPOBE
Luce NRPOLE (Cream)
Nuvola NRPONA (Taupe)

Coordinating Trim

Expect shade variation between field and bullnose.

1/2 x 12 Surface Bullnose NRPO--/112SBN

Decos

9 x 9 Palazzo



Palazzo Piero
NRPO/99P



Palazzo Nicola
NRPO/99N

The Palazzo Decos require four pieces. Care should be taken during installation to make sure the tiles are correctly placed to achieve the desired final look.



Fleur-de-lis with heart
Continuous Line
Fleur-de-lis with teardrop
Broken Line

Note about Palazzo Nicola: Although this seems to be a "single piece" pattern at first glance, it is not. There are two things to look for. The "X" shape is made of a continuous line and a broken line, and there are subtle differences in the fleur-de-lis shape in the corners. Within the continuous line, there is a heart shape inside the fleur-de-lis, while that area looks more like an upside down tear drop in the broken line corners. Because of these details, the pieces do make specific patterns depending on how they are installed. There are a couple of different ways to do it - turning the pieces to create a large diamond shape with the continuous line (see fig.1) or installing every piece facing the same direction to create a criss-cross pattern (see fig.2).

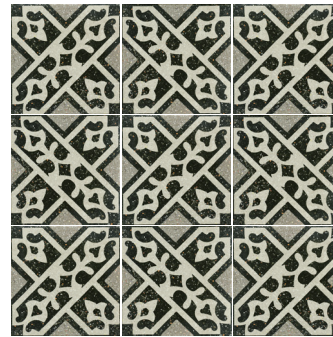


Fig. 1

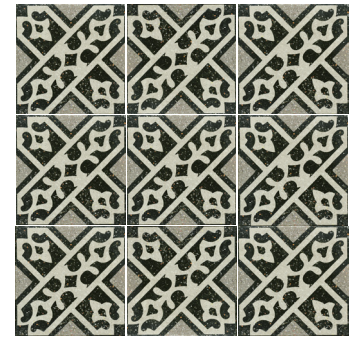


Fig. 2

Usage & Installation

Palazzo is suitable for walls and floors including residential and moderate commercial use. Please note that both patterns need four tiles to complete each pattern. Care should be taken during installation to make sure the tiles are correctly placed to achieve the desired final look. The minimum recommended grout joint is 1/8". Please note that the material is non-rectified. If using more than one item together (i.e. field and decos), please check the caliber and be aware that you may have to adjust the size of the grout joint to make your pattern work.

Variation in size, shape, thickness and surface structure (including uneven edges) is an inherent and desirable characteristic of extruded tile. It is necessary to take this into account when installing the material, treating it like handcrafted tile.

Technical Information

| Physical Properties | Norms | Value | Physical Properties | Norms | Value |
|--|-----------|-------------------|--|---------|------------------|
| Water Absorption | 10545-3 | ≤0.5% Conforms | Resistance to Surface Abrasion | 10545-7 | LE & BE PEI 4 |
| Frost Resistance | 10545-12 | Resistant | | | NA & Decos PEI 3 |
| Slip Resistance | DIN51130R | R9 | The Coefficient of Friction is a general guide only. For more information see our current handout <i>Americans with Disabilities Act and Slip Resistance of Tile</i> . | | |
| Dynamic (DCOF) Coefficient of Friction | DCOF | ≥ 0.42 Wet | | | |

The Coefficient of Friction is a general guide only. Testing may vary with different production runs and with different testing labs. As noted in the American with Disabilities Act (ADA) the coefficient of friction varies considerably due to facts not under the control of entities such as the manufacturers and distributors. These factors include, but are not limited to, contaminants, slope of terrain, drainage conditions, adjacent surfaces, etc. Suitability for any installation can only be determined by a site examination of all conditions that could affect the slip resistance of the tile being installed. Continual cleaning and maintenance must be performed once the tile has been installed.